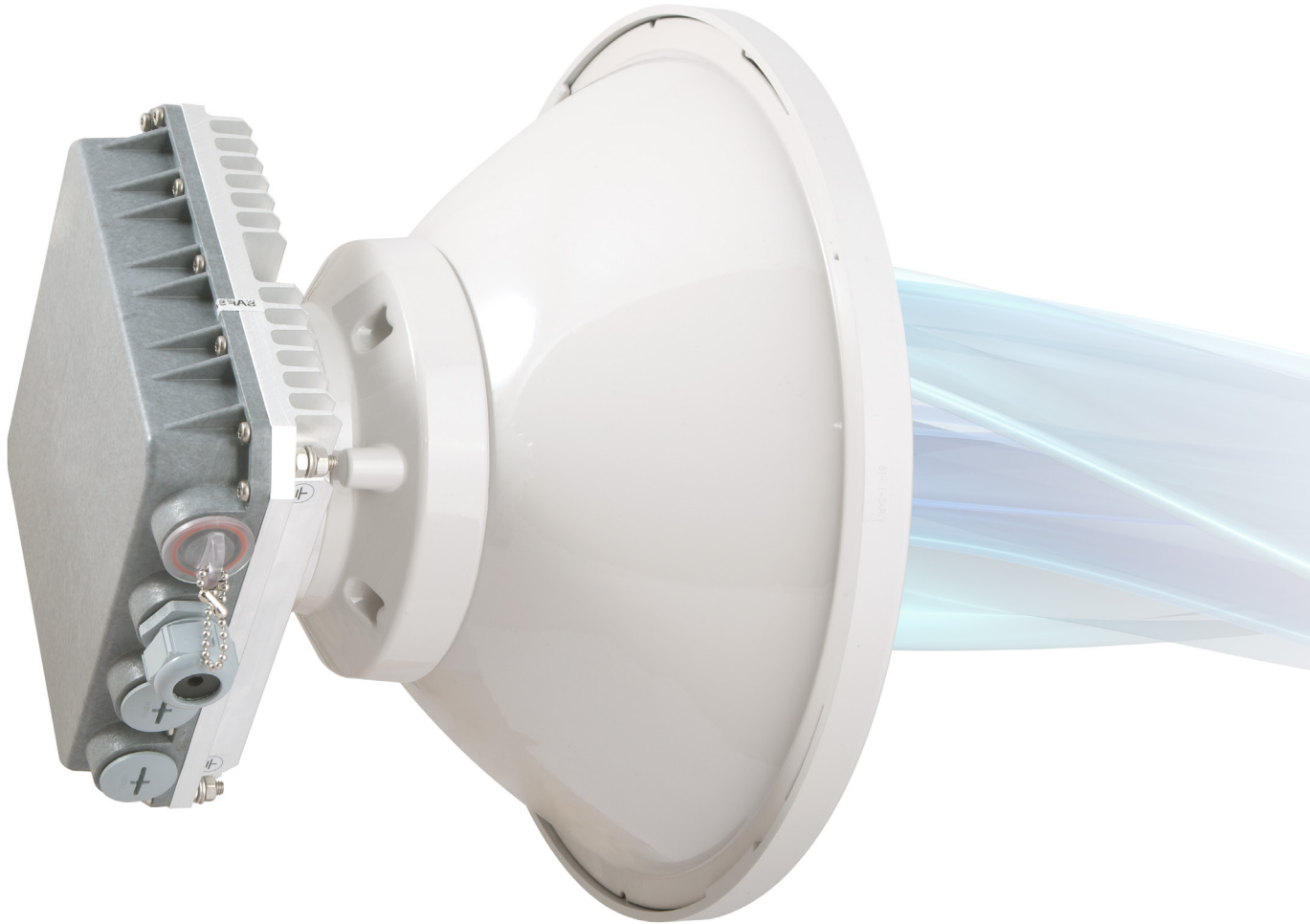


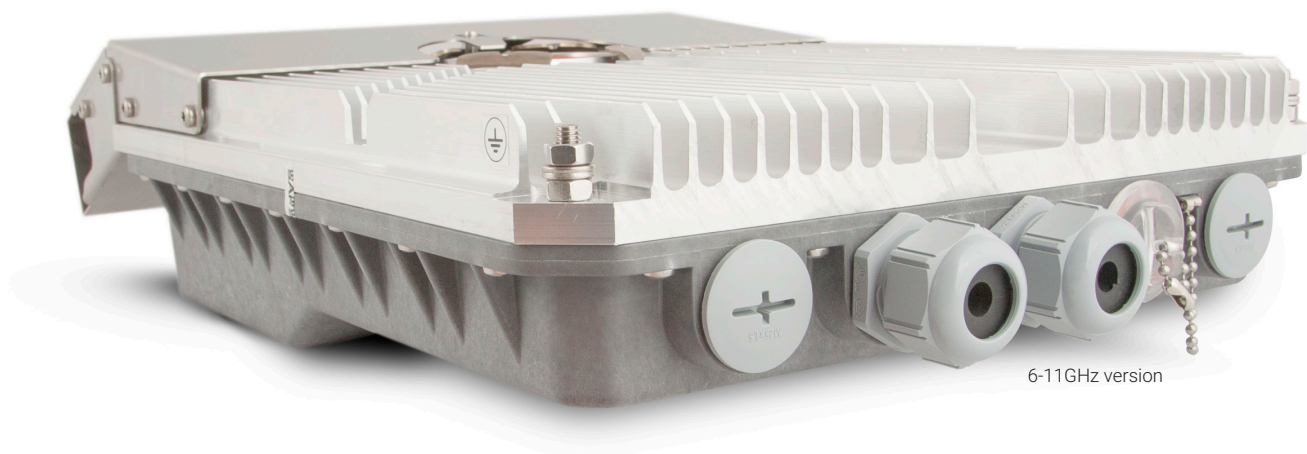


# Integra-WS

carrier-grade microwave radio,  
delivering up to 883 Mbps



- Integra-WS is specifically designed for use with wide channel bandwidths up to 112MHz and supports up to 1024QAM modulation for network upgrades.
- Full outdoor unit includes radio, modem, Ethernet network processor, and PoE splitter with surge arrestor.
- SFP ports for easy installation – choose single-mode or multi-mode fibre by changing SFP's, add fibre optic cabling later.
- High performance predistortion algorithm enables high Tx power performance.



Integra-WS is an unbelievably light, energy efficient carrier-grade system that exemplifies an outstanding return on smart engineering - the synergy of high competence in radio electronics and materials science. Slip-fit design allows integration with existing high performance antenna systems. Gigabit Power over Ethernet (PoE) port defines simple installation, while SFP slot enable fibre optic installation – giving the user ultimate flexibility in cable design.

Capacity	883 Mbps at 112MHz 1024QAM 643 Mbps at 80MHz 1024QAM
Frequency bands	6GHz, 11GHz, 15GHz, 17GHz UL, 18GHz, 23GHz, 24GHz UL, 25GHz, 26GHz, 28GHz, 38GHz, and more*
Modulation	4QAM / 16QAM / 32QAM / 64QAM / 128QAM / 256QAM / 512QAM / 1024QAM with Hitless ACM
Configurations	1+0
<b>Channel bandwidth</b>	
ETSI	from 56MHz up to 112MHz
FCC	from 40MHz up to 80MHz
<b>Gigabit Ethernet</b>	
	1x RJ-45 - Management 1x RJ-45 or 1x SFP - Traffic
<b>Service ports</b>	
3.5mm	Audible alignment and RSSI
USB B-Type	Terminal Access
LED	Power On, Link Synchronization, RSL
Ethernet type	Unmanaged Gigabit Ethernet
Management	In-band*, Out-of-band; SNMP v1/2c/3, SSH, Telnet, HTTPS, Serial, RADIUS, Network Time Protocol
Carrier Ethernet functionality	Transparent
Performance monitoring	Performance graphs, constellation diagram, alarms, detailed counters
Antenna type	External, Slip-fit
Form factor	235 x 250 x 72 mm / 9.26" x 9.85" x 2.84", 2.9 kg / 6.4 lbs (15-42GHz) 280 x 437 x 100 mm / 11.02" x 17.2" x 3.9", 6.5 kg / 14.3 lbs (6-11GHz)
Temperature range	-33 ... +55 °C / -28 ... +130 °F

\* Please contact SAF Tehnika representative for more information



hkaco.com



加关注



需要更多信息? 请通过sales@hkaco.com联系我们。 hkaco.com